

ISSUE NO. : 10-006	DATE : 15th Mar. 2010	PAGES : 1 OF 1
--------------------	-----------------------	----------------

SUBJECT	Modification of Engine Earth Lead Wire
MODEL	GT650, ST7
EFFECTIVE F/M NO	

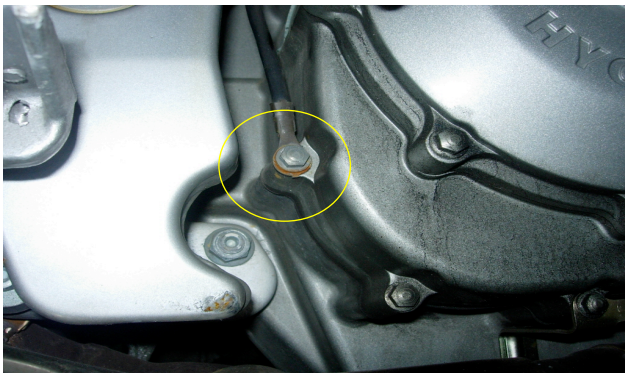
This service bulletin is written to announce a modification of Engine Earth Lead Wire

1. Trouble Cause

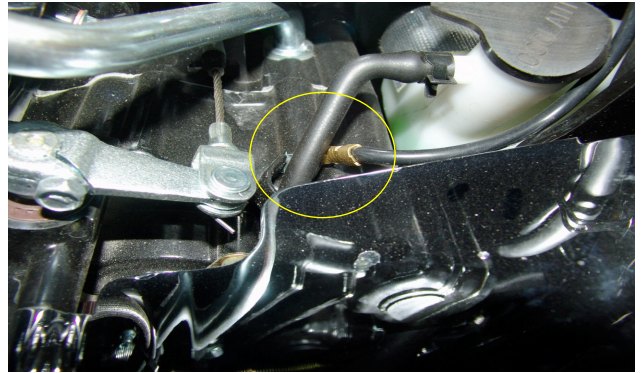
- 1) Engine earth of wiring harness is connected to assembly bolt of painted Clutch cover.
The painted clutch cover makes high resistance and sometimes wiring harness is melted by high resistance.

2. Countermeasure

- 1) The connection point of harness has been changed.
- 2) We put masking tape round the bolt connection point while painting the crank case.



<BEFORE : CLUTCH COVER - M6 BOLT >



<AFTER : CRANK CASE, LH - M6 BOLT >

3. APPLICATION

Model	ENGINE No.	Application Date
GT650	GT650-120494 ~	March 2, 2010 ~
ST7	ALL	ALL

- The End -